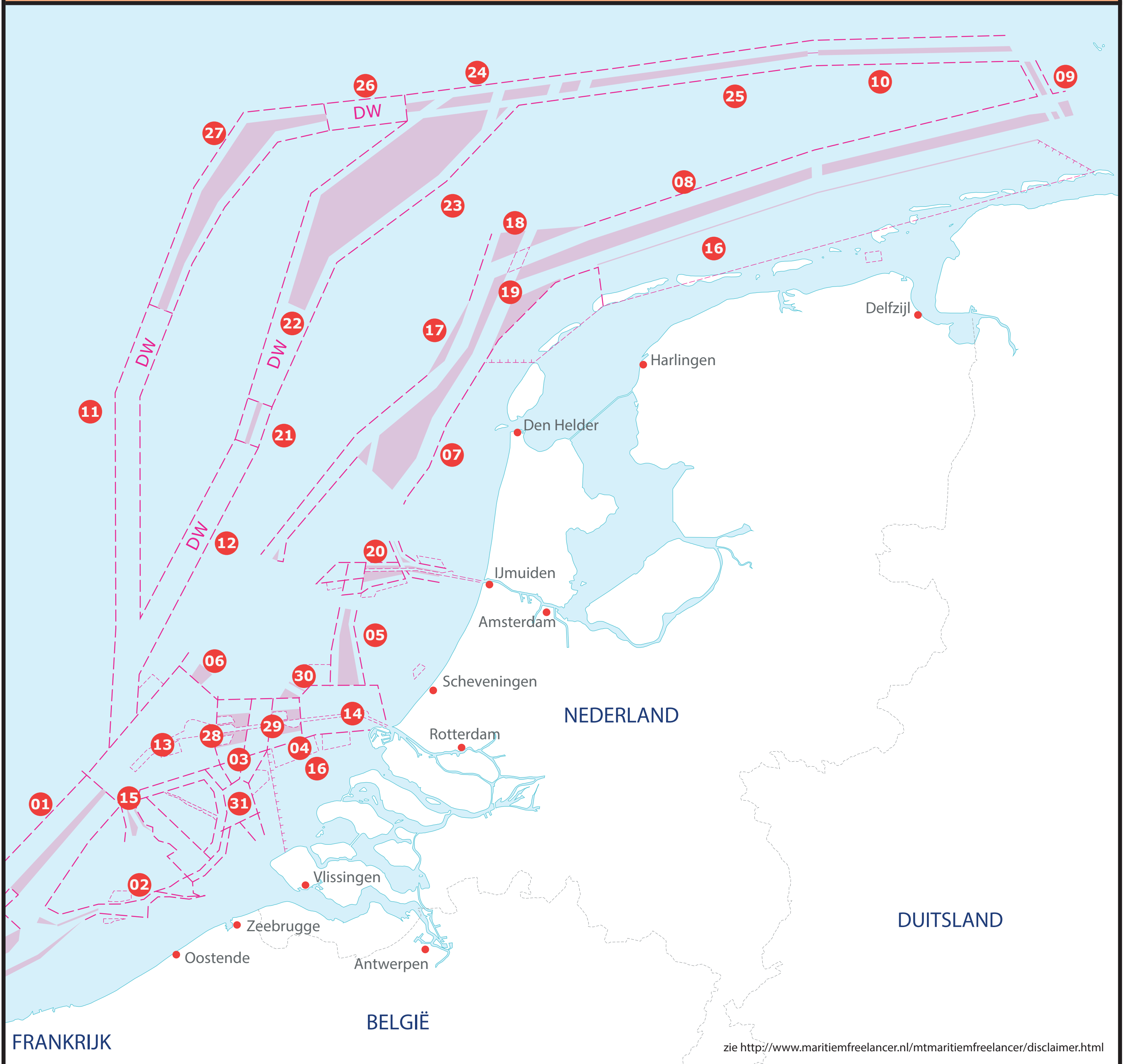


Routeringsmaatregelen voor de Nederlandse & Belgische kust.



- 1) TSS North Hinder South TSS.
- 2) TSS At West Hinder + DWR in the approaches to river Scheldt.
- 3) TSS Maas West outer.
- 4) TSS Maas West inner.
- 5) TSS Maas North.
- 6) TSS North Hinder North.
- 7) TSS Off Texel.
- 8) TSS Terschelling - German Bight.
- 9) TSS Jade approach.
- 10) TSS German Bight western approach.
- 11) DWR from North Hinder to Indefatigable Bank
- 12) DWR from North Hinder to TSS Off Brown Ridge.
- 13) North Hinder Junction precautionary area.
- 14) Maas precautionary area.
- 15) TSS Off North Hinder.
- 16) Inshore traffic zone.

- 17) TSS Off Vlieland.
- 18) TSS Vlieland Noord.
- 19) Precautionary area Vlieland Junction.
- 20) TSS in the approaches to IJmuiden.
- 21) TSS Off Brown Ridge (mandatory route for tankers).
- 22) DWR from TSS 'Off Brown Ridge' to TSS 'West Friesland' (mandatory route for tankers).
- 23) TSS West Friesland (mandatory route for tankers).
- 24) TSS North Friesland (mandatory route for tankers).
- 25) TSS East Friesland (mandatory route for tankers).
- 26) DWR from TSS 'Off Botney Ground' to TSS North Friesland.
- 27) TSS Off Botney Ground.
- 28) DWR Europoort.
- 29) Precautionary area Maas Junction.
- 30) TSS Maas North West
- 31) Approaches to the Schelde estuary.

Verkeersbegeleidend systeem; In Nederlandse wateren is voor een aantal gebieden een zogenaamde "Verkeersbegeleidend systeem" (VBS) ingesteld. Voor de in die gebieden te volgen communicatie-procedures raadpleegt men "The Netherlands Coast Pilot" (HP1) of de UKHO List of Radio Signals.